

IOX-NFCREADERA

For the most up to date version, please visit: goo.gl/Sz7JTA

The IOX-NFCREADERA integrates Near Field Communication (NFC) with the Geotab® GO device to identify drivers operating vehicles in a fleet at any given time. Users create rules, reports, and exceptions on MyGeotab™ based on individual drivers or vehicles.

Top Features

- Simple-to-install IOX® into the Geotab® GO device
- Driver ID Whitelist
- Assigns drivers to vehicles
- Enables driver-based reporting
- Tracks driver data across different vehicles



IOX Hardware Technical Specifications

Weight	170 g
Size	Overall Length: 1300 mm L Widest Point (Antenna): 50 mm W × 13 mm H Widest Point (Connector): 53 mm W × 15 mm H
Housing	Black, moisture-resistant thermoplastic overmold
Interfaces	CAN: 500 kbps (for daisy chaining) Ground Switch: For Relay Control
Frequency	13.56 MHz
Power Output	Daisy Chaining: 2500 mA @ 12 V/24 V
Current Rating	Operating Mode: 100 mA Sleep Mode: 1.1 mA
Temperature Rating	-40 °C to +85 °C
Connectors	Keyed mini-USB type-B plug: Daisy chain power and CAN in Keyed mini-USB type-B socket: Daisy chain power and CAN out 2-pin grounding socket (Molex connector)
Installation	Keyed mini-USB plug connects to the GO device or another IOX Relay module connects to 2-pin socket
Reading Distance	With GEO-NFCSTKBLU: 19 mm With GEO-NFCFOBBLU: 11 mm
Compatible Devices	GO6®, GO7®, GO7 RUGGED, GO8®, GO8 RUGGED, GO9®

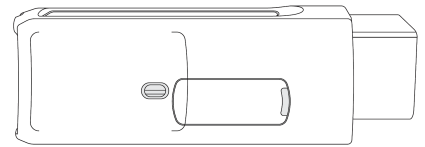
IOX Installation Instructions

WARNING! Prior to IOX-NFCREADERA installation, read and follow GO device installation instructions (goo.gl/rkLRiA) to both verify any existing GO device installation is correct and that you are qualified to complete this IOX-NFCREADERA installation. Incorrect installation of either the GO device or IOX-NFCREADERA can result in loss of vehicle control and serious injury.

WARNING! Prior to IOX-NFCREADERA installation, read and follow [Important Safety Information and Limitations of Use](#), located at the end of the document. Always read and follow all safety information to prevent loss of vehicle control and serious injury.

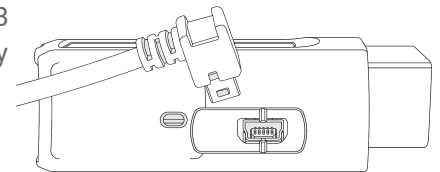
How to Install IOX-NFCREADERA

- 1 Unplug the Geotab GO device from the vehicle and remove the IOX expansion port cover on the GO device.



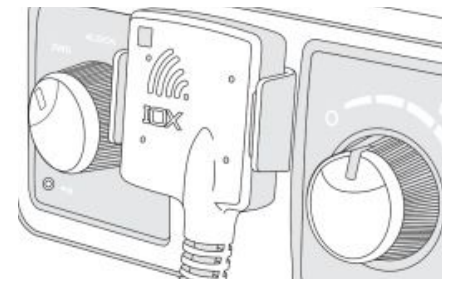
- 2 Plug the 90° USB connector from the IOX in to the GO device. Secure the USB connector using a zip tie. Please note that over tightening the zip tie may damage the USB connector.

Note: Insert the USB connector in the orientation displayed in the image.



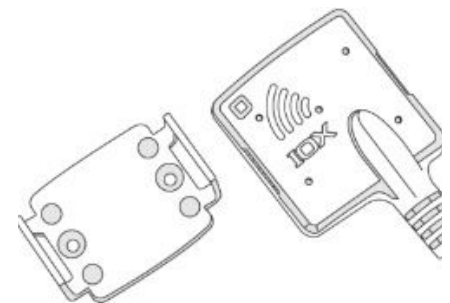
- 3 Choose an appropriate location to mount the NFC Reader within safe reach of the driver.

Note: The location you choose for the GO device influences the locations available to mount the accessory due to the wire length on the IOX-NFCREADERA. Please ensure the installation does not interfere with safe vehicle operation.

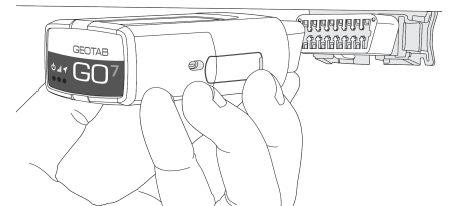


- 4 The NFC Reader comes with a convenient mounting bracket that can either be screwed in place (screws provided) or taped in place (tape provided). The reader snaps into the bracket.

When using tape, ensure the mounting surface is thoroughly clean and dry, and at least 65 °F (18 °C). Hold the tape firmly in place for 60 seconds to ensure the tape has bonded to the surface.

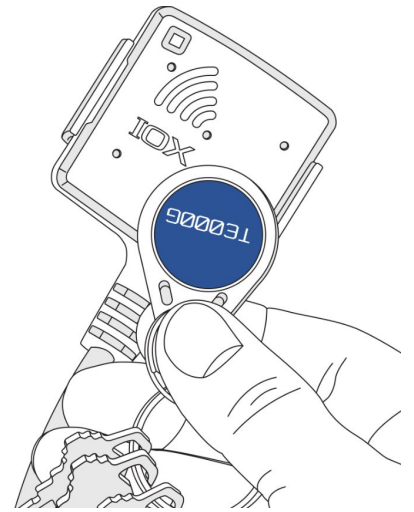


- 5 Once you connect the IOX-NFCREADERA to the GO device, plug in the GO device and immediately start the vehicle. The GO device enters debug mode.



- 6 To test the NFC Reader installation, touch a valid NFC Tag to the reader. The green LED on the reader flashes twice and the GO device emits a single beep when the tag is read. Repeat this step for each additional tag.

If a Driver ID Relay is installed and the feature is active in MyGeotab, you must swipe a valid ID tag to activate the relay. Failure to activate the relay, prior to use, causes the GO device to beep continuously and the electrical connection, driven by the relay, remains inactive until a valid key tag is swiped on the reader.



- 7 Navigate to installmygps.com to verify that the device is communicating. In the space provided, enter your name, the company name, and the GO device serial number – found at the bottom of the device. Click **Log Install**.

Installer Name:

Installer Company:

Device Serial No:

Odometer:

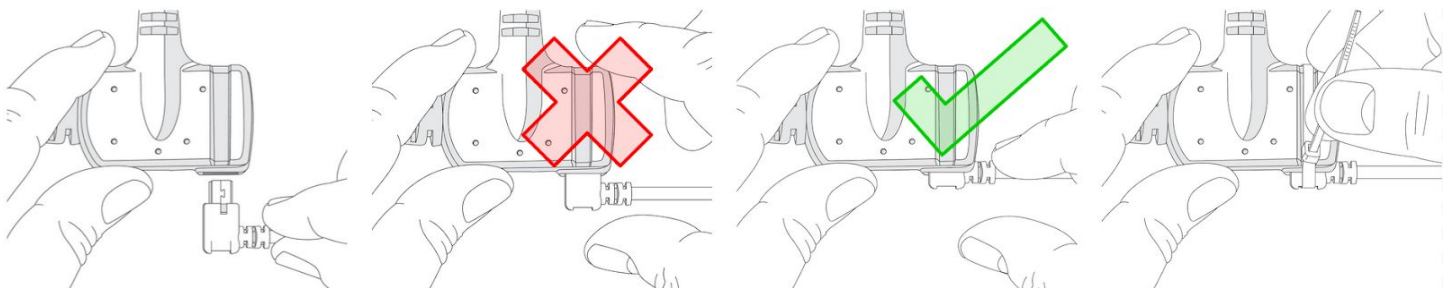
Asset Number:

- 8 After you click **Log Install**, the webpage displayed the current communication status of the device – in **GREEN** or **RED** text. If the device is communicating, the status is displayed in **GREEN** text. If the device is not communicating, the status is displayed in **RED** text.

Note: If the device is not communicating, please ensure the GO device is installed correctly and try again.

Connecting Additional IOXs to an IOX-NFCREADERA

When connecting additional IOXs to an IOX-NFCREADERA, ensure the USB connector is seated correctly and secure the connection with a zip tie.

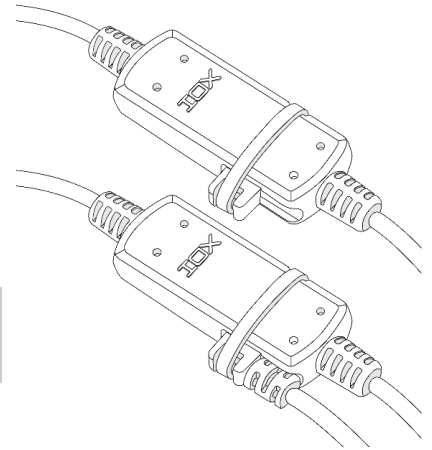


Termination Shunt

The IOX comes with a termination shunt installed in the expansion port. If you plan to install more than one IOX in a daisy chain, you must remove the shunt from each device in the line, with the exception of the last IOX connected. The shunt must remain in the last IOX and secured with a zip tie.

The shunt in the last IOX device ensures the GO device detects and configures the IOX, as effectively as possible.

Note: Failure to install the shunt in the last IOX may affect IOX communication. To ensure the IOX communicates, please secure the shunt with a zip tie.



Driver ID Whitelist

To create a whitelist of authorized drivers for a particular GO device, apply the following custom parameter to the GO device through MyGeotab:

```
<Parameter Description="Enable Authorised Driver List" Offset="164" Bytes="8" IsEnabled="true"/>
```

Once the parameter is applied, the IOX-NFCREADER only accepts driver key tags assigned to an authorized driver. You can add and remove drivers to/from the whitelist through the Geotab API (my.geotab.com/sdk/#/api). See the DriverWhiteListContent object for more details.

The whitelist mode is disabled when the custom parameter is removed from the GO device.

Older Product Designs

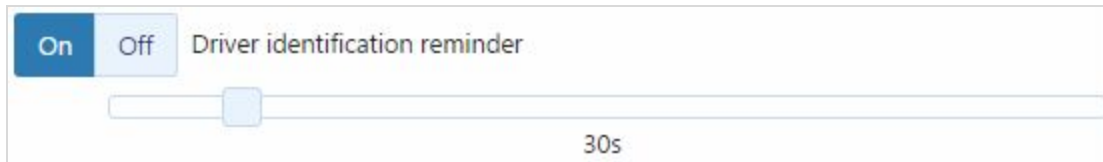
The previous version of the IOX-NFCREADER is shown below.



Driver Feedback Settings

To enable the relay option in MyGeotab, prior to IOX installation:

- 1 Navigate to MyGeotab.
- 2 Select **Vehicles**, located in the navigation menu to the left.
- 3 Select the GO device.
- 4 Select the **Driver Feedback** tab.
- 5 For **Driver identification reminder**, click **On** and set the time limit using the slider.



Driver ID Relay

Requires Professional Installation: To install a Driver ID Relay in conjunction with the IOX-NFCREADER, please review the instructions in the SPR-RELAYKIT Install document (goo.gl/Dljbok).

Incompatibility

The IOX-NFCREADER cannot be used in conjunction with the IOX-HID.

Compliance

FCC: 2AAFQ-NFC1

This device complies with Part 15 of the FCC rules. Operation is subject to the following two conditions: (1) this device may not cause harmful interference, and (2) this device must accept any interference received, including interference that may cause undesired operation of the device.

Note: The manufacturer is not responsible for any radio or TV interference caused by unauthorized modifications to this equipment. Unauthorized modification voids the user's right to operate the equipment.

IC: 11140A-NFC1

This device complies with Industry Canada licence-exempt RSS standard(s). Operation is subject to the following two conditions: (1) this device may not cause harmful interference, and (2) this device must accept any interference received, including interference that may cause undesired operation of the device.

Norma Oficial Mexicana (NOM):

This device complies with Norma Oficial Mexicana (NOM) certification in Mexico. This certification applies to select

Resellers.

Anatel (Brazil)

This equipment is not entitled to protection against harmful interference and may not cause interference in duly authorized systems.

Important Safety Information and Limitations of Use

For the latest version of the Limitations of Use, please visit: goo.gl/k6Fp0w.

WARNING! Do not attempt to install, configure or remove any product from any vehicle while the vehicle is in motion or otherwise in operation. All installation, configuration or removal must be done only in stationary vehicles which are securely parked. Attempting to service units while being operated could result in malfunctions or accidents, leading to death or serious personal injury.

WARNING! All in-vehicle devices and related cabling must be securely fastened and kept clear of all vehicle controls, including gas, brake and clutch pedals. You must inspect devices and cabling on a regular basis to ensure all devices and cabling continue to be securely attached. Loose cabling or devices may impede the use of vehicle controls, resulting in unanticipated acceleration, braking or other loss of vehicle control, which could lead to death or serious personal injury. Improperly fastened in-vehicle devices may detach and impact operators upon sudden acceleration or deceleration, which may cause injury.

WARNING! If at any point after an in-vehicle device is installed a warning light illuminates on the vehicle dash or the vehicle stalls or has a marked drop in performance, shut off the engine, remove the device, and contact your Reseller. Continuing to operate a vehicle with these symptoms can cause loss of vehicle control, and serious injury.

WARNING! Your in-vehicle devices must be kept clear of debris, water and other environmental contaminants. Failure to do so may result in units malfunctioning or short-circuiting that can lead to a fire hazard or vehicle damage or serious injury.

WARNING! Do not attempt to remove the devices from the vehicle in which they are originally installed for installation in another vehicle. Not all vehicles share compatibility, and doing so may result in unexpected interactions with your vehicle, including sudden loss of power or shutdown of the vehicle's engine while in operation or cause your vehicle to operate poorly or erratically and cause death or serious injury and/or vehicle damage.

NOTICE – This product does not contain any user-serviceable parts. Configuration, servicing, and repairs must only be made by an authorized reseller or installer. Unauthorized servicing of these products will void your product warranty.

 **WARNING:** Cancer and Reproductive Harm - www.P65Warnings.ca.gov.